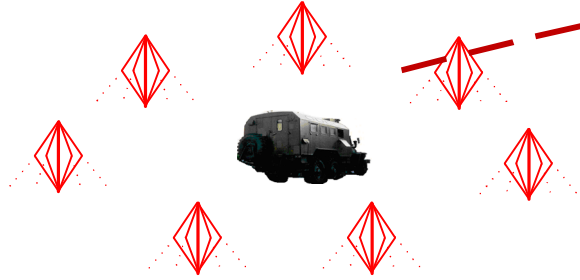


Diagram structural of direction finding stations "Ukol-RK", "Berkut" and "Philin-HF/DF" integration

Station of radiomonitoring and direction finding

"Ukol-RK"

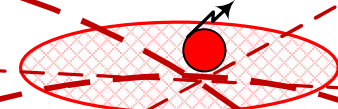


Mobile direction finder
"Berkut"



Triangulation Method
(3-5 % from distance to RE)

RE 1



Hand-held direction finder
"Philin-HF/DF"

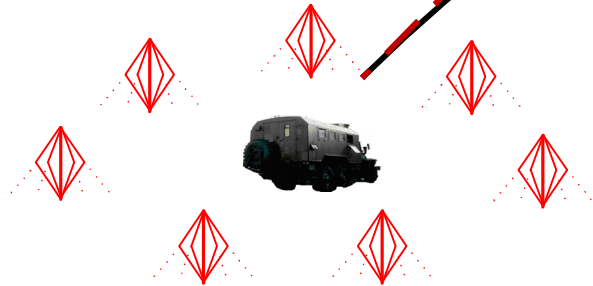


Mobile direction finder
"Berkut"



Station of radiomonitoring and direction finding

"Ukol-RK"



Mobile direction finder
"Berkut"



Method SSL

(25 % from distance to RE)

RE 2



Hand-held direction finder
"Philin-HF/DF"



Mobile direction finder
"Berkut"

